

Courses up Jacobs Creek  
from post S 21 W 30

N 75 E 20

N 28 E 26

S 85 E 2 1/2

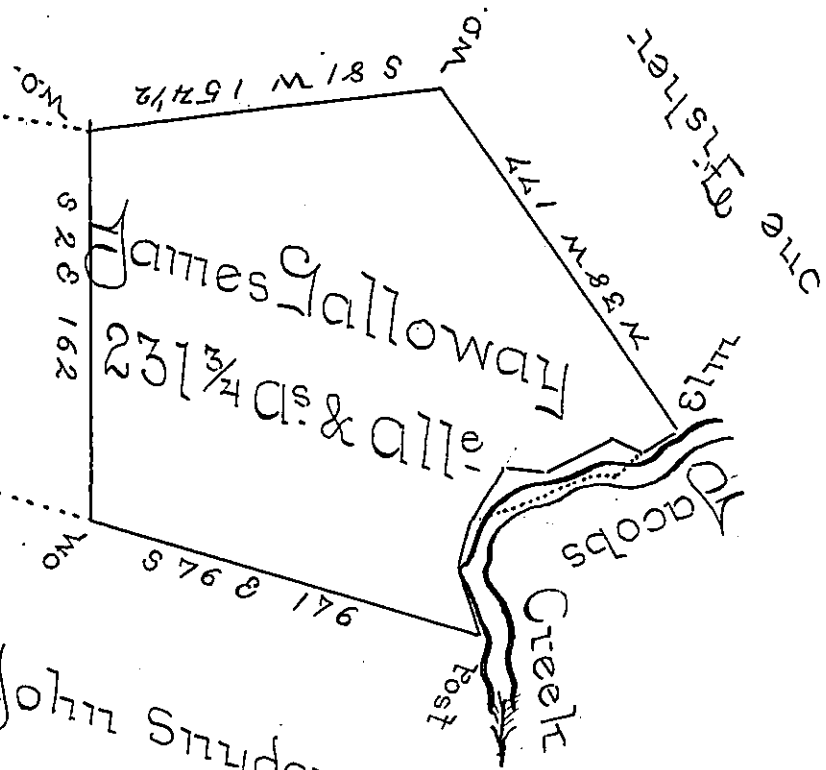
N 61 E 32

S 65 E 16

N 50 E 19 to

an Elm 16 1/2

Lawrence Shope



In Pursuance of a Warrant bearing date January 16<sup>th</sup> 1797. Surveyed March 20<sup>th</sup> 1798 unto James Galloway the above described Tract of Land Containing two hundred thirty one 1/4 Acres & Allow<sup>e</sup> &c Situate in South Huntington Township Westmoreland County -

Benj. Lodge D.S.

Daniel Brodhead Esq<sup>r</sup> }  
Surveyor General s }

IN TESTIMONY that the above is a copy of the original remaining on file in the Department of Internal Affairs of Pennsylvania, made conformably to an Act of Assembly approved the 16th day of February, 1833, I have hereunto set my Hand and caused the Seal of said Department to be affixed at Harrisburg, this third day of October 1899,-

*James W. Pitta*  
Secretary of Internal Affairs.